

# Sunsail 44

## Specifications and Equipment List - Sunsail Upgrades In Bold

### DECK & HULL

---

- Single skin hull, hand-laid fibreglass, ISO gelcoat surface, protective barrier coat
- Infused fiberglass inner liner, easy access to grounding frame, relamination in stays attachment areas
- Injected deck via Prisma Process®. This process yields a very high-end part that is finished on both sides and reduces the weight by 30% with minimum impact on the environment
- Twin rudders with self-aligning roller bearings and textile lines, to increase control and pleasure in navigation
- **Shoal draft iron keel**
- **Closed, GRP compartment for portside cockpit locker**
- Easy circulation thanks to the inclined side decks
- Flush deck hatches
- Long tinted acrylic roof windows
- Split rigging: Inboard shrouds for easier access forward
- 6 x (stainless steel) mooring cleats - bow, stern & midship
- Handrails on coachroof
- Open bow pulpit (stainless steel)
- Stern pushpits in stainless steel with buoy bracket and emergency ladder
- Deep anchor locker
- **12v - 1000w Electric windlass with 10mm gypsey, hand control wired direct**
- **Additional bow roller with reinforcement**
- Long fixed tinted windows along coachroof
- Fixed cockpit windows in the aft cabins
- 6 x Large, fixed hull ports
- 4 x Opening ports
- 7 x Opening deck hatches
- Opening ports towards cockpit in the aft cabins (1 per cabin)
- Opening ports towards side-deck in the aft cabins (1 per cabin)
- Large cockpit table with compass, cup holders, area for navigation instrument, cockpit light switch, LED lighting, bottle storage
- Wood inlay on cockpit bench seating
- Cockpit lockers: 1 on starboard side, 1 on port side (version B and C only), 1 large locker on the cockpit floor that can be used for the optional generator, 1 liferaft locker with open access to transom platform 92 x 65 x 48 cm / 3'01" x 2'13" x 1'57"
- Universal gas box, cut-off valve under the stove
- Emergency tiller with fitting in cockpit floor
- **Lifeline gates with removable access ladder for side gates**
- Large bathing platform with telescopic ladder, handrail and access step to the cockpit
- **Transom protection**
- Hinged companionway doors in plexiglass
- Sliding horizontal hatch in plexiglass
- Full-length chine for improved stability and speed
- Long waterline for better speed while sailing and under power
- L-shaped cast iron keel less exposed to seaweed and lines
- Engine control: throttle lever at starboard helmstation and oriented engine panel on the cockpit table
- Anchor bow roller fitting
- **Outboard engine bracket**
- **Bimini and dodger**
- **Sunsail striping and graphics**

### MAST, RIGGING & SAILS

---

- Classic aluminium mast with double spreaders, deck-stepped, cathedral geometry and split rigging
- Mainsheet attached to bridle forward of companionway, with sheets lead back to the cockpit winches
- Aluminum boom with rigid vang and lowered goose neck for easier handling
- Double backstay
- **Profurl genoa furler**

## EXHIBIT A

- Running rigging polyester topping lift, main halyard, genoa halyard, mainsheet, genoa sheets, reefing lines
- Standing rigging is discontinuous wire 1 x 19
- Genoa tracks with adjustable lead cars
- Spinlock line stoppers
- 1 x Harken 40.2 ST coachroof winch to port
- **1 x Additional Harken 40.2 ST electric coachroof winch to starboard**
- 2 x Harken 46.2 ST genoa winches for easy use at the helm stations
- Winch handle
- Genoa furler with twin groove and furling line led to cockpit
- **Stackpack LazyJack system in Sunsail blue with logo**
- **Windex wind vane**

## ENGINE & CONTROLS

---

- **Yanmar 4JH45CR – 45 hp common rail diesel engine with shaft drive**
- Built-in muffler, forced air ventilation and stainless steel exhaust fitting aft
- 3-Blade fixed propeller
- Ventilation system extractor fan located near the engine, benefiting from the insulation of the engine room. Outlets vents at the back of cockpit
- Roto moulded fuel tank 200 L / 53 US gal located under the aft cabin berth, fuel / water separator
- Access behind steps to engine compartment and from aft cabins

## SALOON/INTERIOR

---

- Headroom in saloon: 6'4" / 6'5" (1.94m / 1.97m)
- Finished in Fine Teak laminate panels, trimmed in solid wood protected with UV stabilized varnish
- Fully-upholstered hull sides and ceiling
- Light oak composite floorboards
- Comfortable seating arrangement to port for six with view of sea through hull ports
- Hinged storage compartments under settee seating
- Large storage between the saloon and the companion way
- Large storage behind backrests
- Large table with two removable, aluminum legs and central bottle storage
- **Saloon table converts to double berth**
- **Floorboard sealed edges**
- **Companionway steps covered in non-slip surface**
- **Hasp on companionway door**
- **Shades and screens for hatches and ports in saloon**

## NAVIGATION CONSOLE

---

- Chart table with stowage locker under hinged lid
- Book shelf
- Large storage space under electrical panel for books and other navigation equipment
- Bicolour reading light
- Ergonomic chart table seat

## GALLEY

---

- U-shape galley located on port side
- Corian® galley worktop surfaces
- Double sinks (stainless steel) with covers and chrome mixer tap
- Large drawer in the centre cabinet
- Soft-close, fully-extending drawers
- Open storage behind the galley
- **Stainless steel gas stove with 2 burners**
- Opening hatch above the stove
- Fridge 130 L / 34 US gal with front opening
- **Additional freezer in the galley**

---

*Initials*

---

*Initials*

## EXHIBIT A

### AFT CABINS

---

- Large domestic size, rectangular berth 2,00 m x 1,60 m / 6'6" x 5'2", with High Density Premium mattress
- Hanging locker storage shelf along hull
- LED lighting
- LED reading lights
- 1 long fixed hull port, 1 large fixed cockpit window
- 1 opening port on coachroof, 1 opening port towards the cockpit, 1 opening port towards the side decks

### CABINS x 4

---

- Overhead roller blinds for privacy in combination with roller bug screens

### AFT HEAD

---

- Double access, from starboard cabin and saloon, GRP sink furniture, storage with towel shelf, Teak shelf with fiddle, large roof window, opening port for light and ventilation, indirect LED lighting, shower, shower drain with automatic switch
- Water inlet valve and connector underneath the sink, hook, large mirror, shower separated with a plexiglas door
- **Large bowl Quiet Flush electric, freshwater head toilet**

### FORWARD CABINS

---

- Berth of 2,00 x 1,42 / 0,78 m / 6'6" x 4'7" / 2'6", High Density Premium mattress
- Hanging locker
- Storage under berth
- LED lighting
- Opening deck hatch with ventilation
- Large fixed hull window with sliding blinds
- Blind and bugs screen for deck hatch

### FORWARD HEAD

---

- Access from the port side cabin and from the saloon, GRP sink furniture, storage with towel shelf, Teak shelf with fiddle, roof window, large deck hatch, for light and ventilation, indirect LED lighting
- Shower, shower drain with automatic switch, water inlet valve and connector underneath the sink, large mirror
- **Large bowl Quiet Flush electric, freshwater head toilet**

### PLUMBING INSTALLATION

---

- Hot and cold water distributed throughout the boat via semi-rigid hose
- Water pump and accumulator tank
- Roto moulded tank: 330 L / 87 US gal, under the aft cabin berth
- **Additional 200L / 53 US gal water tank**
- Tank gauges (1 per tank)
- Tank manifold with selector valves
- Transom shower with hot and cold water mixer
- 2 x Holding tanks, total capacity 24USgal / 90L
- Electric bilge pump located in bilge area with activation via switch at electrical panel
- Dual-action manual bilge pump located in the cockpit, with separate hose from primary bilge pump
- **Cockpit sink**

### ELECTRICAL INSTALLATION

---

- Main 12 V electrical panel at the chart table
- 12 V Circuit for house and engine system
- Domestic battery bank capacity 2 x 115 Ah / 12 V
- **2 x Additional 115 Ah domestic batteries**
- Engine start battery capacity 1 x 120 Ah / 12 V
- **Navicolor supervision control display**

---

*Initials*

---

*Initials*

## EXHIBIT A

- **1 x 40amp battery charger**
- **12 V engine alternator: 125 A**
- **Positive battery switch for engine and house bank in aft cabin**
- **Shore power air conditioning**
- **USB plugs in cabins**
- **6 x Fans (1 in saloon, 1 in galley, and 1 in each cabin)**
- **2 x Shore power cables**
- **Shore power cable holder**
- **Raymarine Instrument Package: Includes i70s multifunction display, depth-speed sensor, masthead wind sensor, VHF, p70s autopilot + ACU400 core unit and gyrocompass, GPS Axiom 9 multifunction touchscreen display with WIFI, cartography Navionics silver.**
- **Fusion stereo system with bluetooth and saloon and cockpit speakers**

## SAFETY GEAR

---

- **Primary and secondary anchors**
- **6 x Fenders**
- **4 x Dock lines**
- **Life jackets and safety harnesses per max pax**
- **Bell**
- **Flare Kit**
- **Binoculars**
- **Navigation tools: Parallel rule, compass, dividers**

## CRUISING GEAR

---

- **Bed linens per max pax**
- **Towels and washcloths**
- **Plates, cups, saucers, glasses per max pax**
- **Flatware per max pax**
- **Pots, pans, miscellaneous food prep tools**
- **Cooking and serving utensils**
- **Coffee pot, tea kettle, toaster**
- **Snorkeling gear per max pax**

---

*Initials*

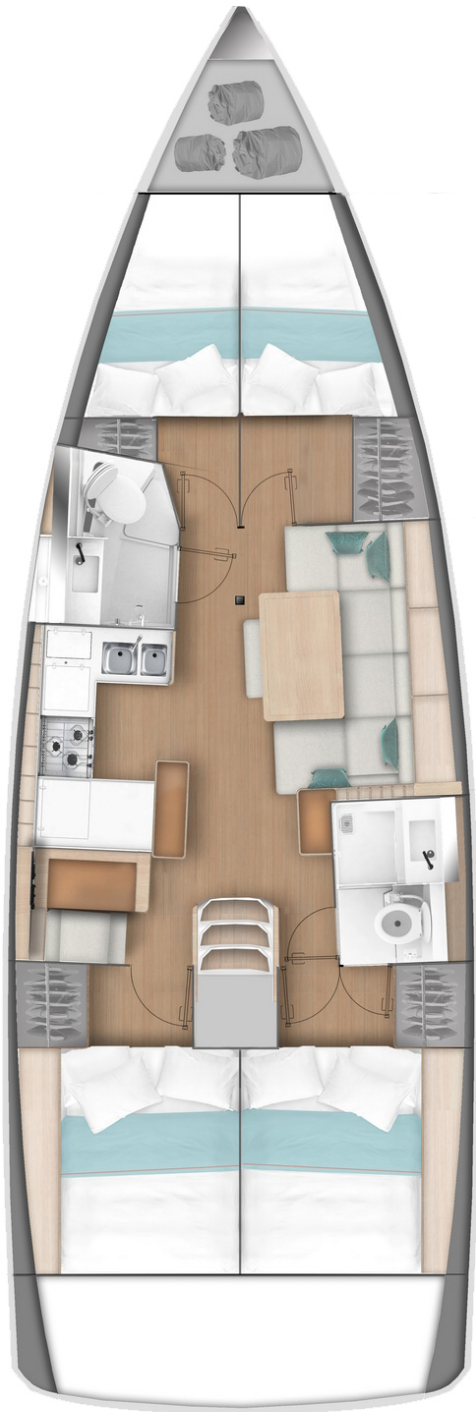
---

*Initials*

EXHIBIT A

GENERAL SPECIFICATIONS

- Length Overall: 13.00m/42ft 7in
- Waterline Length: 12.00m/39ft 4in
- Beam: 4.29m/14ft 0in
- Draft: 1.60m/5ft 2in
- Fuel Capacity: 200L/53gal
- Water Capacity: 530L/140gal
- Engines: Yanmar 45 HP



The Builder reserves the right to change or amend the contents of this document at any time without prior notification to any third party, and no liability will be accepted for errors contained within the same.

\_\_\_\_\_  
**Initials**

\_\_\_\_\_  
**Initials**